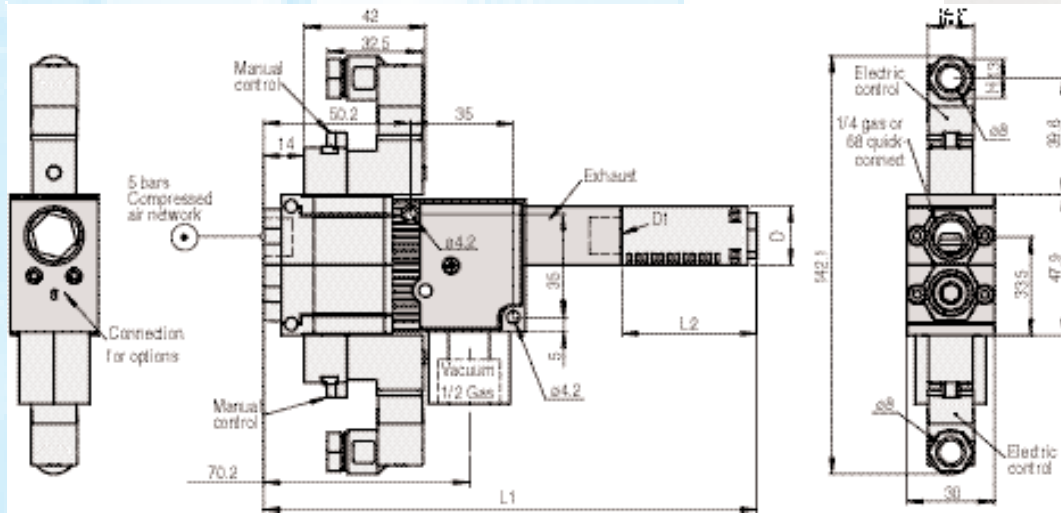
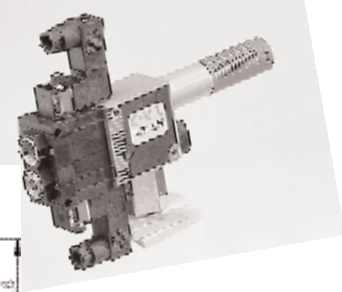


Safety venturis with blow-off, series G



1/4 Gas
Tube 6x8

Applications:

The vacuum generator in the GVS series is more commonly known as a **safety venturi**. Like those in the GVPD range, it **has integrated vacuum generation and blowing**. In addition, **two safety non-return valves** hermetically blank off the vacuum circuit in the event of failure of either of the two power sources (electric and/or pneumatic). It therefore ensures that parts remain gripped. Caution: Parts to be handled must be of the **non-porous** type.

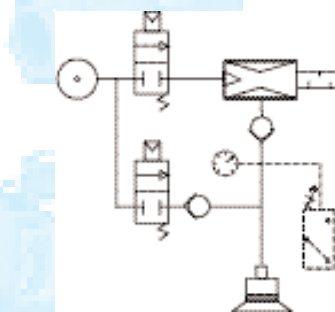
Characteristics:

Characteristics	Nozzle ø	Air consumption	Max. vacuum	Drawn-in air	D	D1	L1*	L2	
Models	mm	NI/min	as %	NI/min	mm	Gas	mm	S	K
GVS 12	1.2	67	90	45	20	1/4	157.2	45	68
GVS 15	1.5	100	90	70	20	1/4	167.2	45	68
GVS 20	2	180	90	125	30	1/2	167.2	60	121
GVS 25	2.5	270	90	200	30	1/2	167.2	60	121
GVS 30	3	400	90	265	30	1/2	300.2	-	121

(*): L1 equipped with standard silencer

Specifications:

Compressed air	Filtered, non-lubricated, 2 to 6 bars
N° of valve operations	15 million
Operating frequency	2 Hz maximum
Valve function	N.C.
Valve function	N.O. at 24 V DC on request
Valve/body material	Aluminium
Optimal pressure	5 bars
Work rate	Less than 20 cycles per minute



Options:

See pages 28 to 31.

GVS		1	2	3	4	5				
1: Nozzle		12	2: Characteristics	3: Silencer	4: C.A. coupling	5: Control				
	12	1.2 mm	N	90% vacuum	-	Without silencer	14	1/4 G BSPP	P1	Pneumatic
	15	1.5 mm			S	Large reduction in dB	68	tube 6x8 calibrated	E1	24 V DC, N.C.
	20	2 mm			K	Through type			E2	220 V - 50 Hz
	25	2.5 mm							E3	24 V AC
	30	3 mm							E6	24 V DC, N.O.
									E..	Others, page 37

Dimensions and characteristics may be modified without notice.